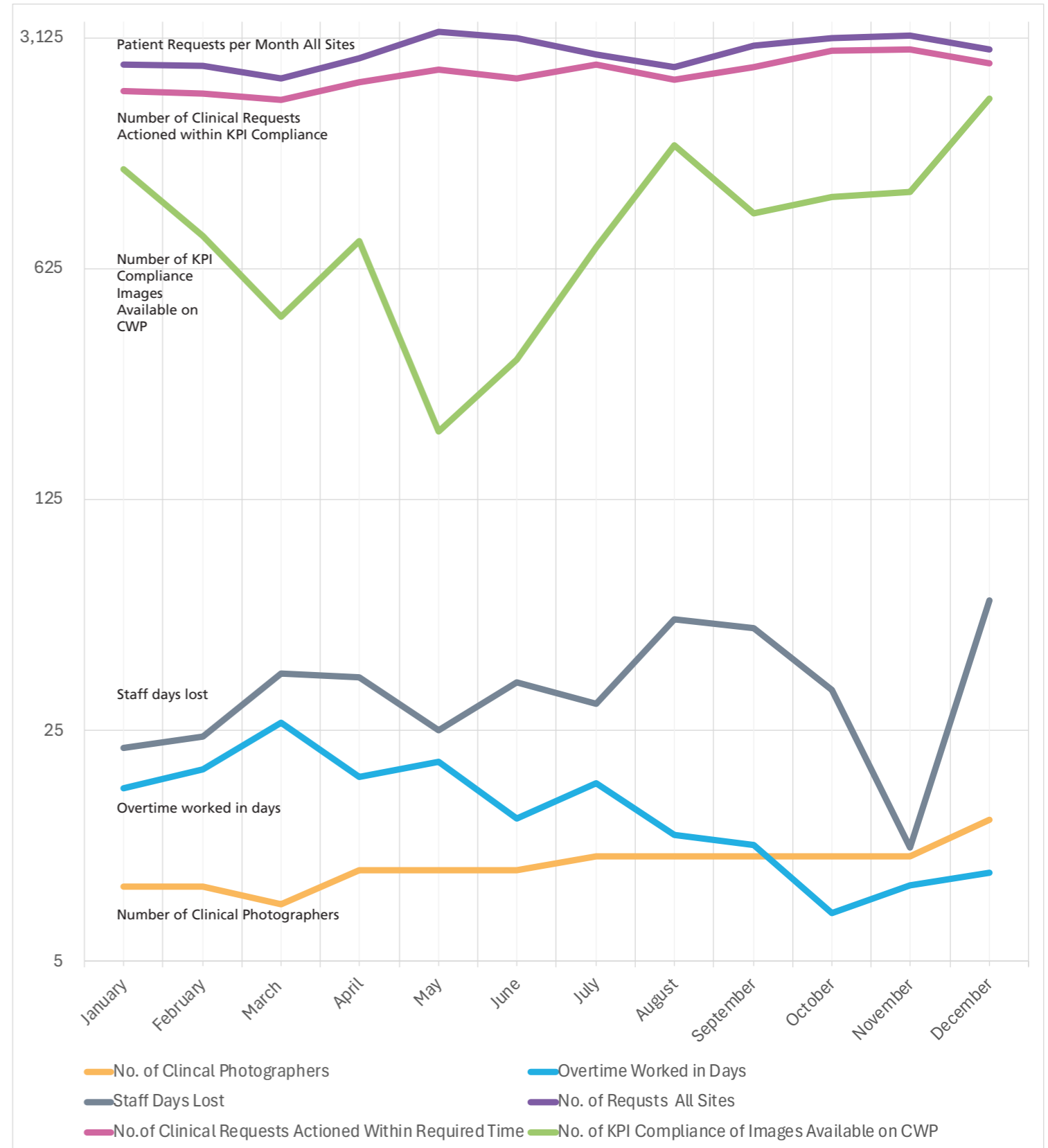
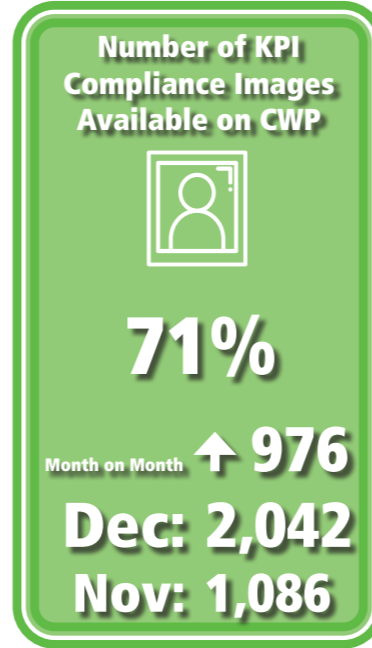
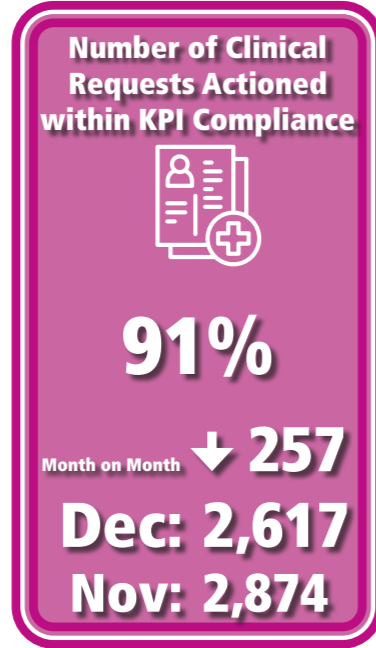
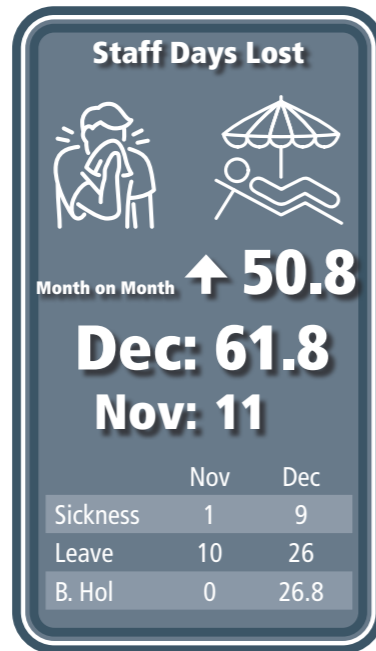
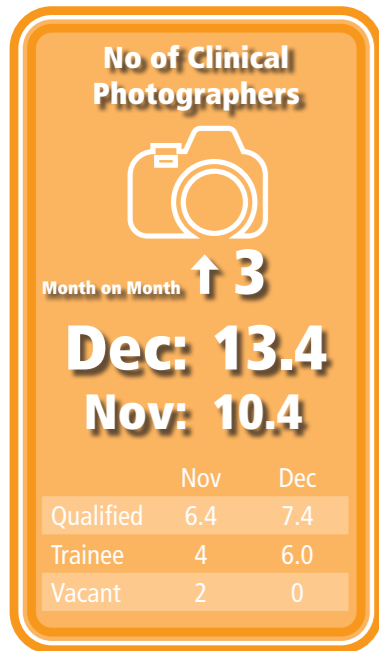


Clinical Activity - December 2024

Patient Centred



Workforce



Notes:

- 2 trainee photographers and 1 qualified photographer started. The fully qualified photographer is the Lead for the new Teledermatology service for RWT/WHT.
- The TeleDerm photographer contributed to the QA process, resulting in a temporary improvement in the KPI for images available on CWP.
- As this post is super summary, their contribution to the daily processing and KPI targets is only for the short term.
- Next month the KPI is likely to be lower, as training new staff will take up the capacity of the Senior Clinical Photographers.
- Overtime increased due to the Bank Holiday on-call cover.

Reprographic Activity - December 2024

Reprographics

Number of reprographics requests - all sites

Year on year **↑ 407**
 2023/24 **12,289**
 2024/25 **12,696**

Month on Month **↓ 285**
Dec: 1,068
Nov: 1,353



	Nov	Dec
Design	843	705
Print	464	421
Photography	63	48
Video	36	33
Animation	7	3
ID Cards	388	296

Workforce

No of Reprographics Staff

Month on Month **↕ 0**
Dec: 7
Nov: 7

Staff Days Lost

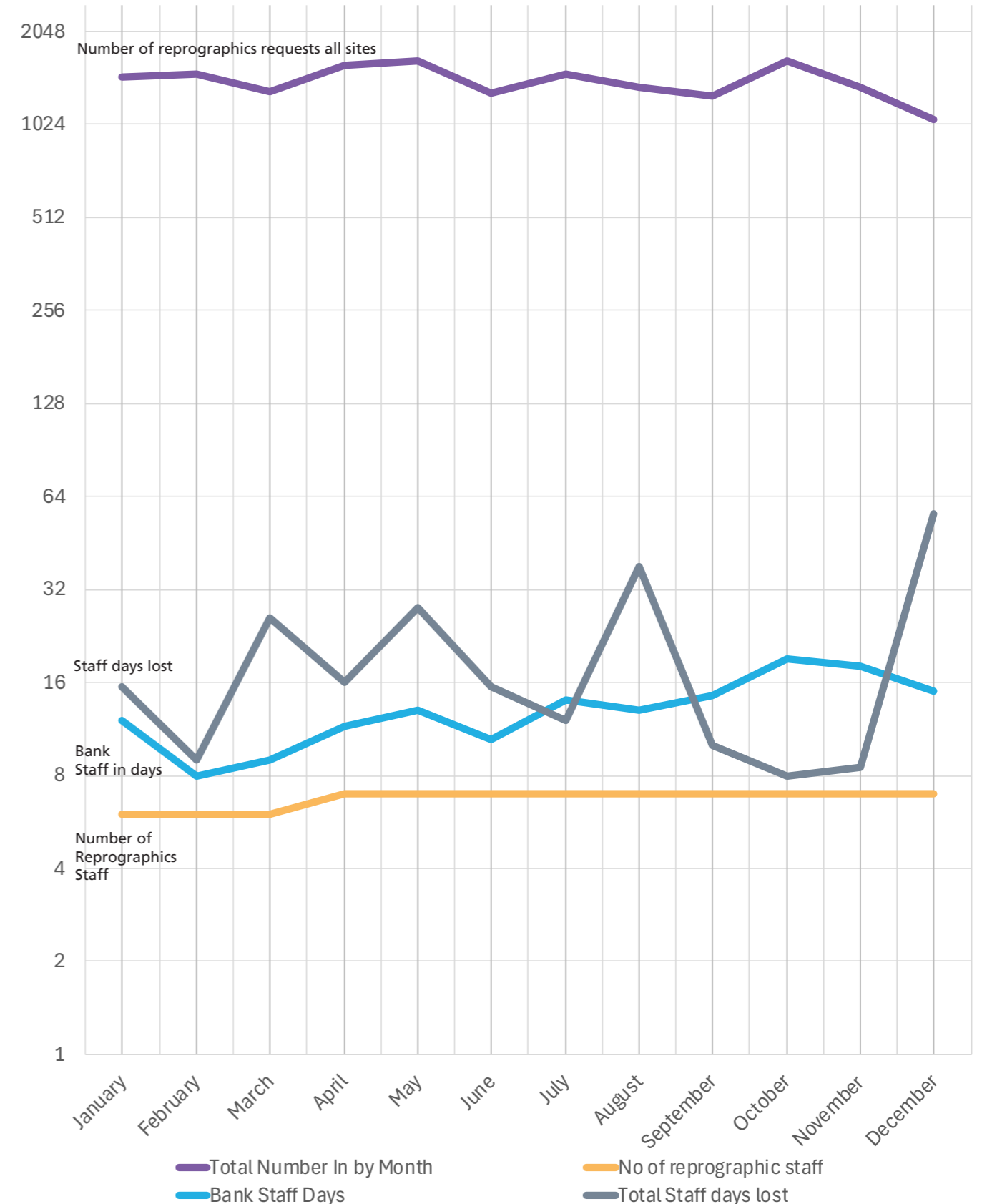
Month on Month **↑ 48**
Dec: 56.5
Nov: 8.5

	Nov	Dec
Sickness	0	3
Leave	8.5	26
B. Hol	0	28

Overtime worked in Days

Overtime **↕ 0**
Dec: 0
Nov: 0

Bank Staff **↓ 3**
Dec: 15
Nov: 18



Notes:

- As predicted, December saw a decrease in activity for design and print, this is due to annual leave within the Trust during the Christmas period.
- There was an increase in photography and video requests due to the amount of festive activities and donations for both RWT and Walsall Healthcare.
- Recruitment across the Trust reduced during December, having an impact on ID requests, however with Student Nurses and Doctors starting in January this has since increased.