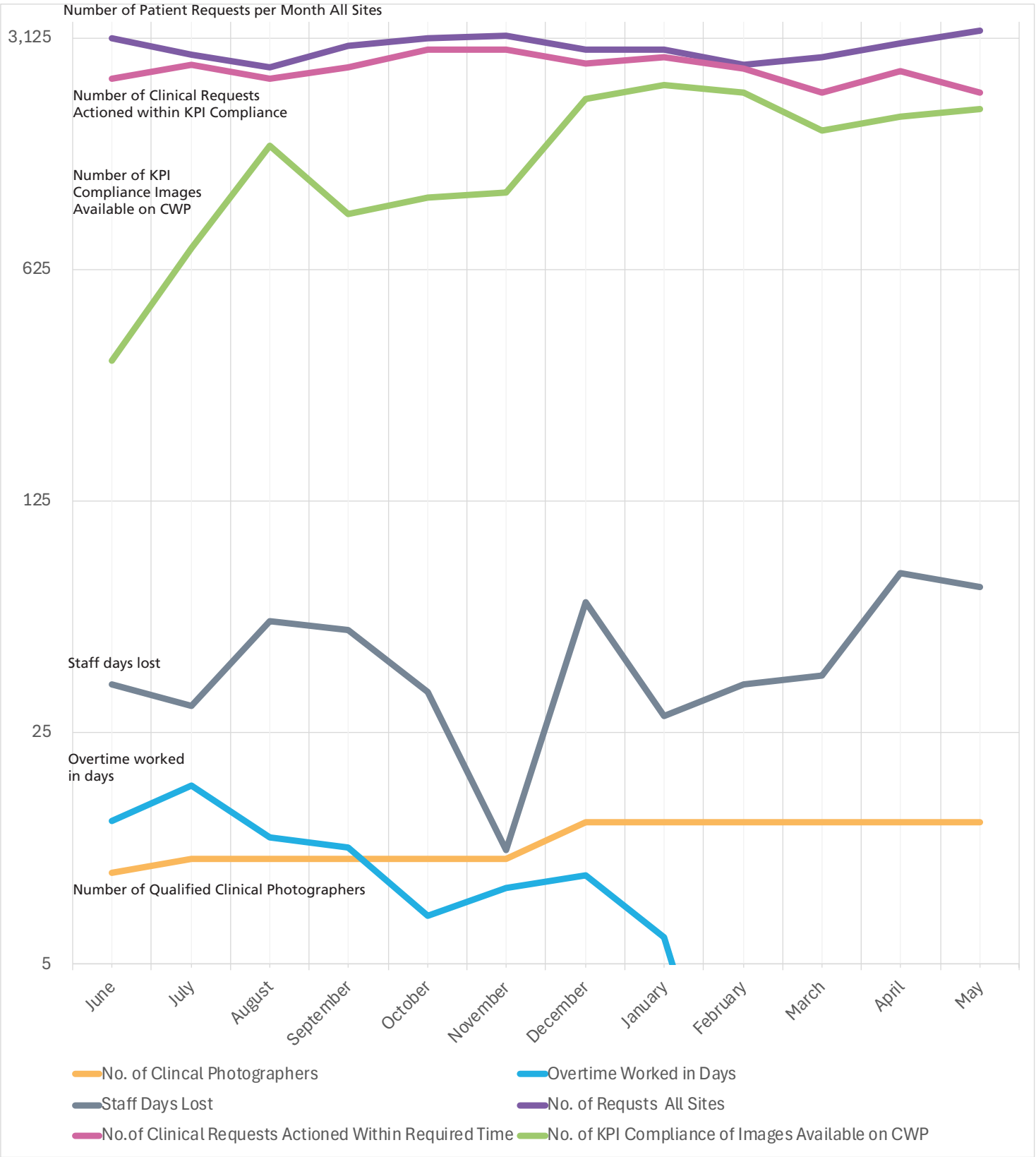
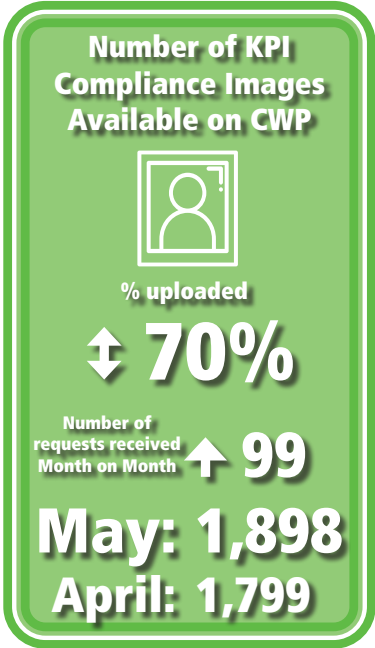
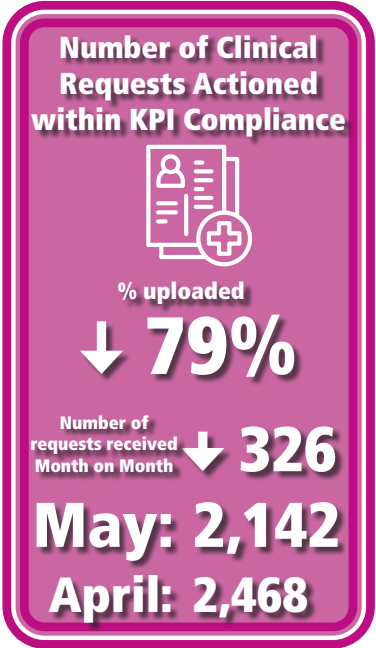
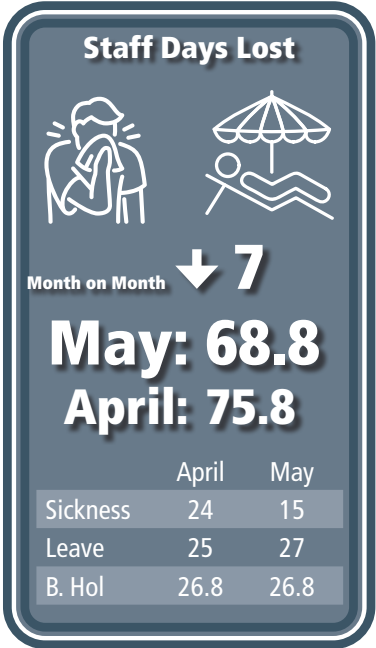


Clinical Activity - May 2025

Patient Centred



Workforce



Notes:

- The activity for May saw a further increase of 432 compared to the same period last year 1/4/24 to 31/5/24), across all sites, including Teledermatology.
- The KPI for attending to patients fell to 79% from 90% in April. Care should be taken to ensure that the oldest requests are dealt with first, after urgent or time critical requests.
- The percentage uploaded stayed the same at 70%, due to the limit number of staff currently able to QA images.
- The total clinical figure for all sites in June is 3611
- The total non-clinical figure for June is 1600